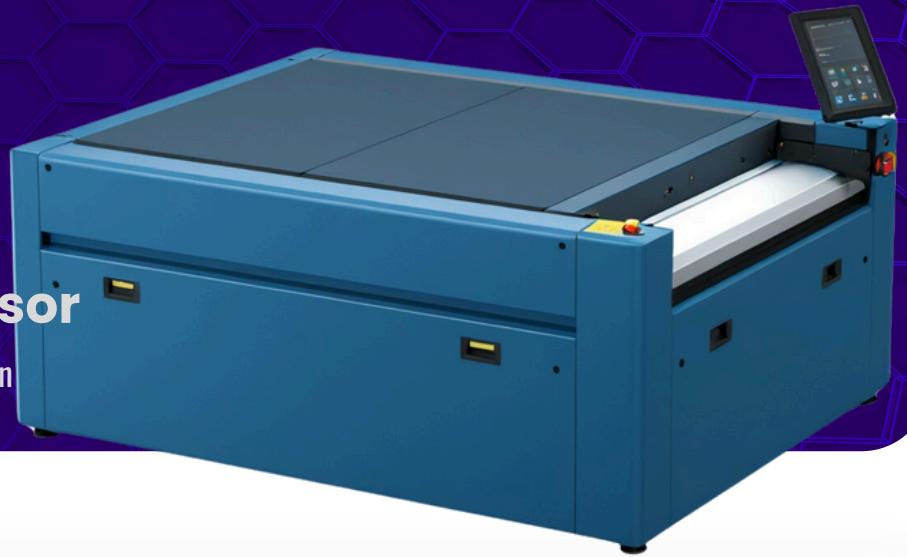


THE FLEXO COMPANY

Xpro XL-Pi

Incremental Processor

Max Plate Size: 132x203cm / 52x80in



Redefining Efficiency: **Our Less is More Approach**

Only three pumps, three motors, less electronic components and a simplified heating/cooling system. Uncompromised performance while delivering superior results.

Reduced componentry not only leads to much lower energy consumption but also enhances the machine's reliability. This simplification translates into reduced costs: a saving we proudly pass on to our customers

KEY FEATURES:

- **Superior Washout Quality:** The unit feature **new brush material** for consistently high washout quality over the years.
New solvent spray system secure even solvent distribution, completely **new wiping/cleaning system ensures higher quality of the finished plates**, and guarantees less wear on the brushes, as well as easier adjustment during maintenance.



THE FLEXO COMPANY

KEY FEATURES:

- **Reliability and Low Maintenance:** the unit has fewer components compared to competitors, resulting in **greater reliability and reduced maintenance costs.**
- **Maximizing Solvent Savings:** featuring a closed brush chamber, **solvent condensation returns to the bath, reducing solvent consumption** and emissions, creating a healthier room environment.
- **iFlexo: Data and Remote Control:** you have the option to equip the unit with iFlexo; a high performance software that provides **remote control and upgrades by TFC**, extended data collection, and a monitoring system with preventive warnings about wear and tear of parts.
- **Energy Efficiency:** the unit operates on a **single-phase 220-240V** power supply, significantly **reducing energy consumption.**
- **Compact Design:** the smallest footprint of in category
- **Technical Support:** **The Flexo Company ensures 7/7 technical support** to promptly address any issues and minimize disruptions.
Tailor-made maintenance packages are available to ensure optimal performance.
- **Water Option:** if you initially buy the unit for solvent use and later decide to switch to water, it can be retrofitted. **You can invest in a machine using the best current solvent technology**, with the confidence that **it can be modified on your site to operate with water later on**, at a fraction of the cost of a new machine.



Technical Data:

Dimension: cm W200xL495xH108 / in W79xL195xH43

Weight: 1280 kg / 2820 lb

Power Supply: 220/240 V 50/60Hz F+N+Gnd

Air Supply: min 6 Bar / max 10 Bar

EXPLORE

THE FULL CATALOG OF PRODUCTS ON OUR WEBSITE:

www.theflexocompany.com/products



THE FLEXO COMPANY

78 av. des Champs Elysées, 75008 Paris, France
info@theflexocompany.com
www.theflexocompany.com