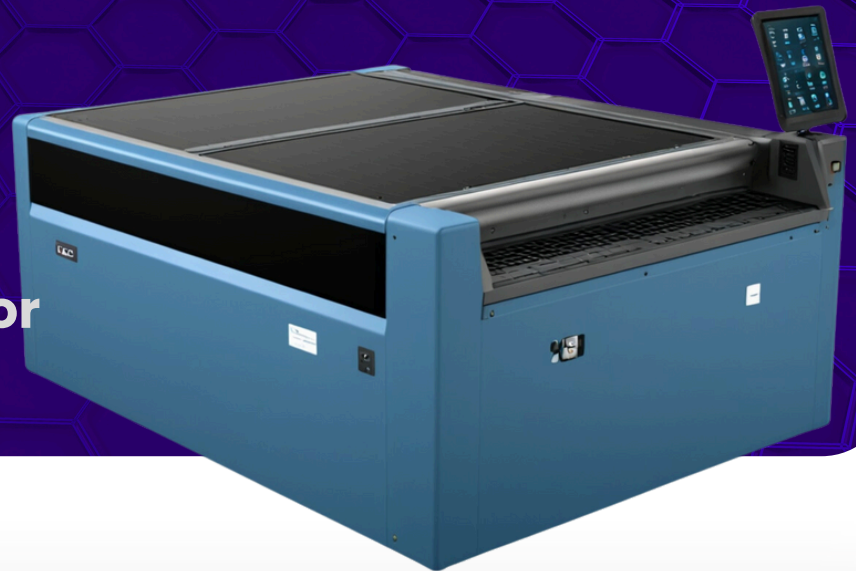


THE FLEXO COMPANY

Xpro M-Pi

Incremental Processor

Max Plate Size: 90x120cm / 36x48in



The Fastest mid-size Washout Unit in its Category

The machine stands out as the fastest washout unit in its category, thanks to an innovative design and construction unparalleled in the industry. This allows for wash cycles up to 25% faster than any other solvent wash system currently available on the market.

KEY FEATURES:

- **Superior Washout Quality:**

Using the same advanced wash technology as full-size processors

The unit feature **new brush material** for consistently high washout quality over the years.

New solvent spray system secure even solvent distribution, completely **new wiping/cleaning system ensures higher quality of the finished plates**, and guarantees less wear on the brushes, as well as easier adjustment during maintenance.



THE FLEXO COMPANY

KEY FEATURES:

- **Reliability and Low Maintenance:** the unit has fewer components compared to competitors, resulting in **greater reliability and reduced maintenance costs.**
- **Maximizing Solvent Savings:** featuring a closed brush chamber, **solvent condensation returns to the bath, reducing solvent consumption** and emissions, creating a healthier room environment.
- **iFlexo: Data and Remote Control:** you have the option to equip the unit with iFlexo; a high performance software that provides **remote control and upgrades by TFC**, extended data collection, and a monitoring system with preventive warnings about wear and tear of parts.
- **Energy Efficiency:** the unit operates on a **single-phase 220-240V** power supply, significantly **reducing energy consumption.**
- **Compact Design:** the smallest footprint of in category
- **Technical Support:** **The Flexo Company ensures 7/7 technical support** to promptly address any issues and minimize disruptions.
Tailor-made maintenance packages are available to ensure optimal performance.
- **Water Option:** if you initially buy the unit for solvent use and later decide to switch to water, it can be retrofitted. **You can invest in a machine using the best current solvent technology**, with the confidence that **it can be modified on your site to operate with water later on**, at a fraction of the cost of a new machine.



Technical Data:

Dimension: cm W200xL410xH108 / in W79xL162xH43

Weight: 1100 kg / 2425 lb

Power Supply: 220/240 V 50/60Hz F+N+Gnd

Air Supply: min 6 Bar / max 10 Bar

EXPLORE

THE FULL CATALOG OF PRODUCTS ON OUR WEBSITE:

www.theflexocompany.com/products



THE FLEXO COMPANY

78 av. des Champs Elysées, 75008 Paris, France
info@theflexocompany.com
www.theflexocompany.com